



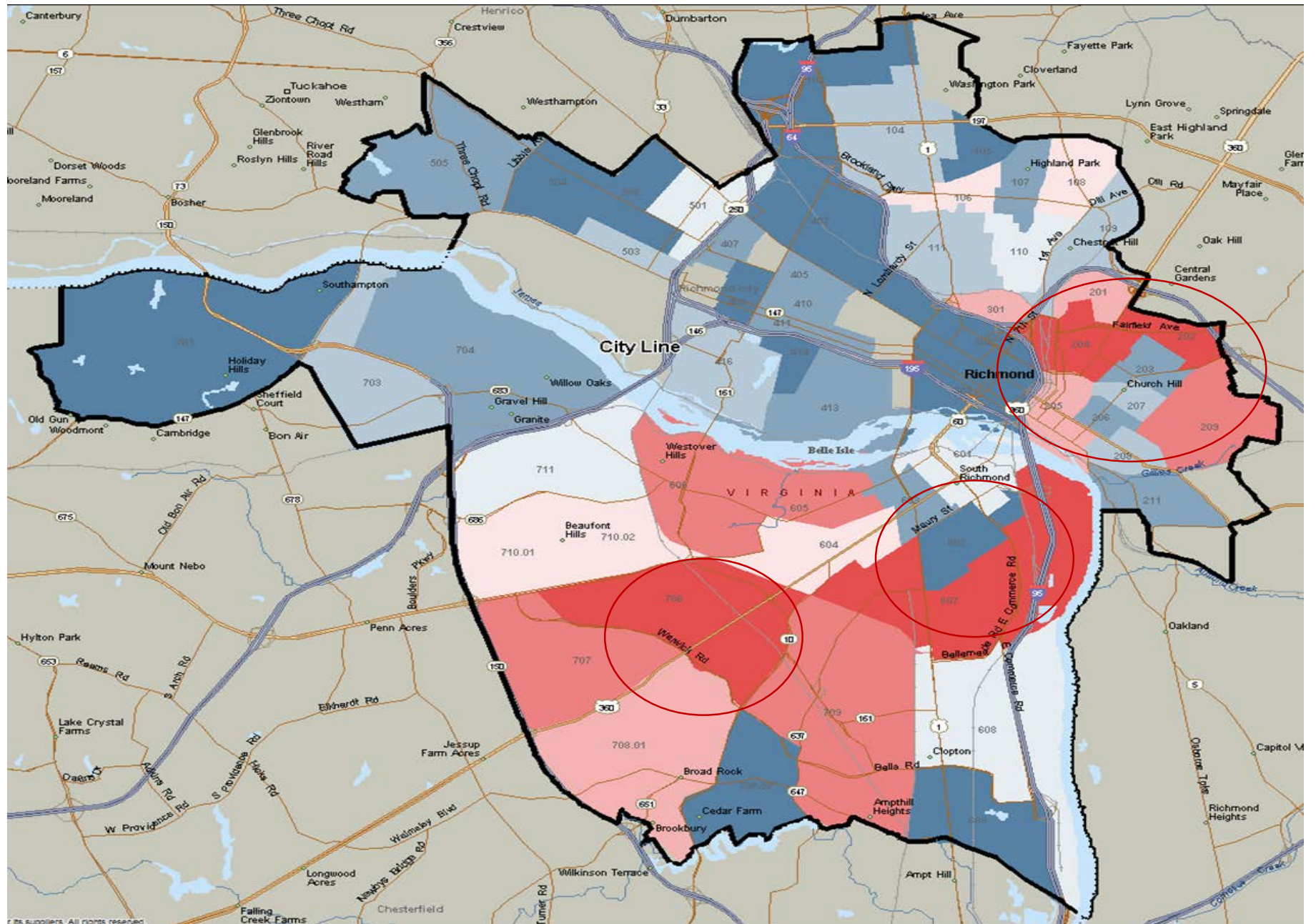
Exploring the Health and Housing Link in Richmond, VA

Danny TK Avula MD, MPH

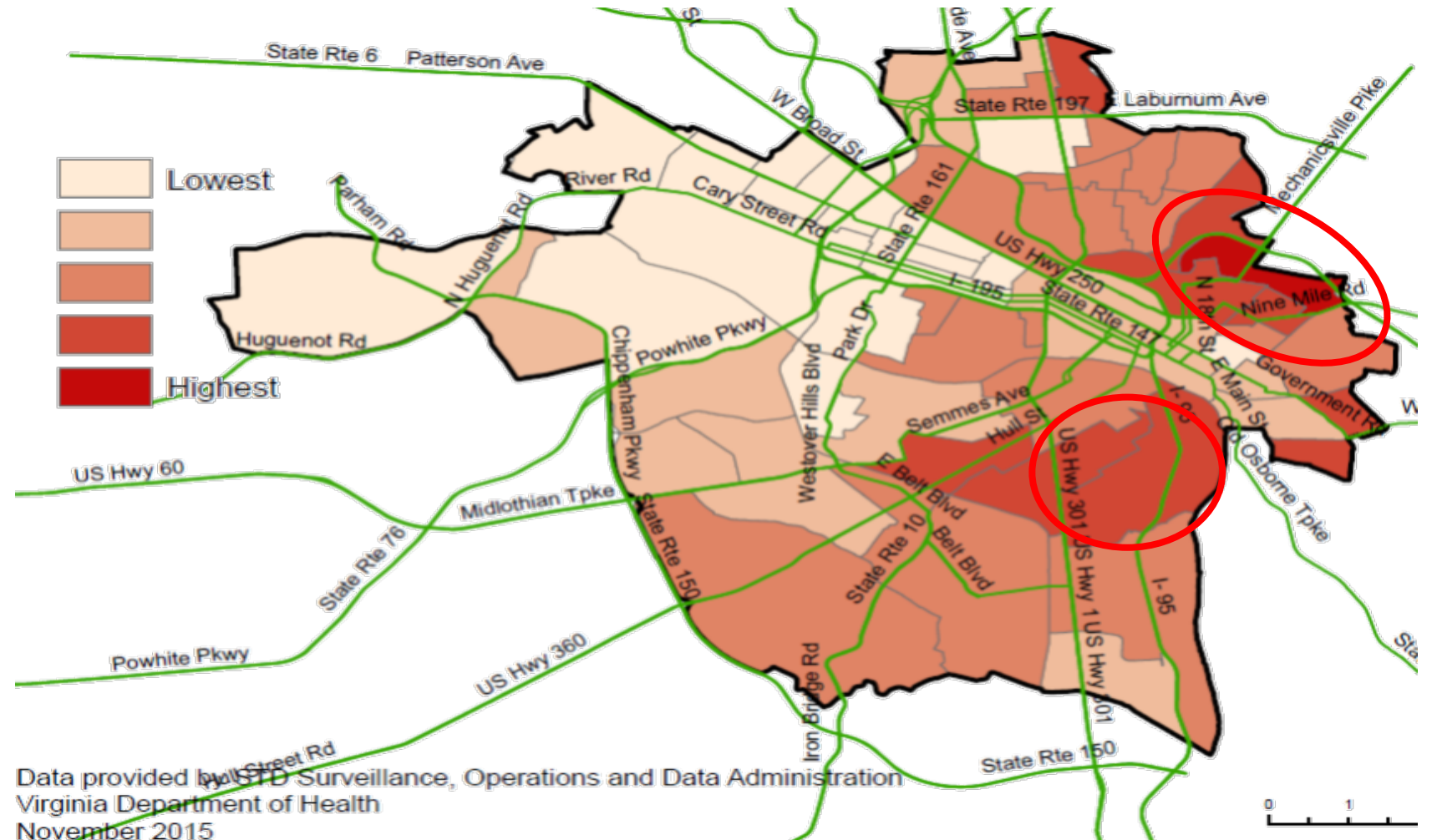


**RICHMOND CITY
HEALTH DISTRICT**

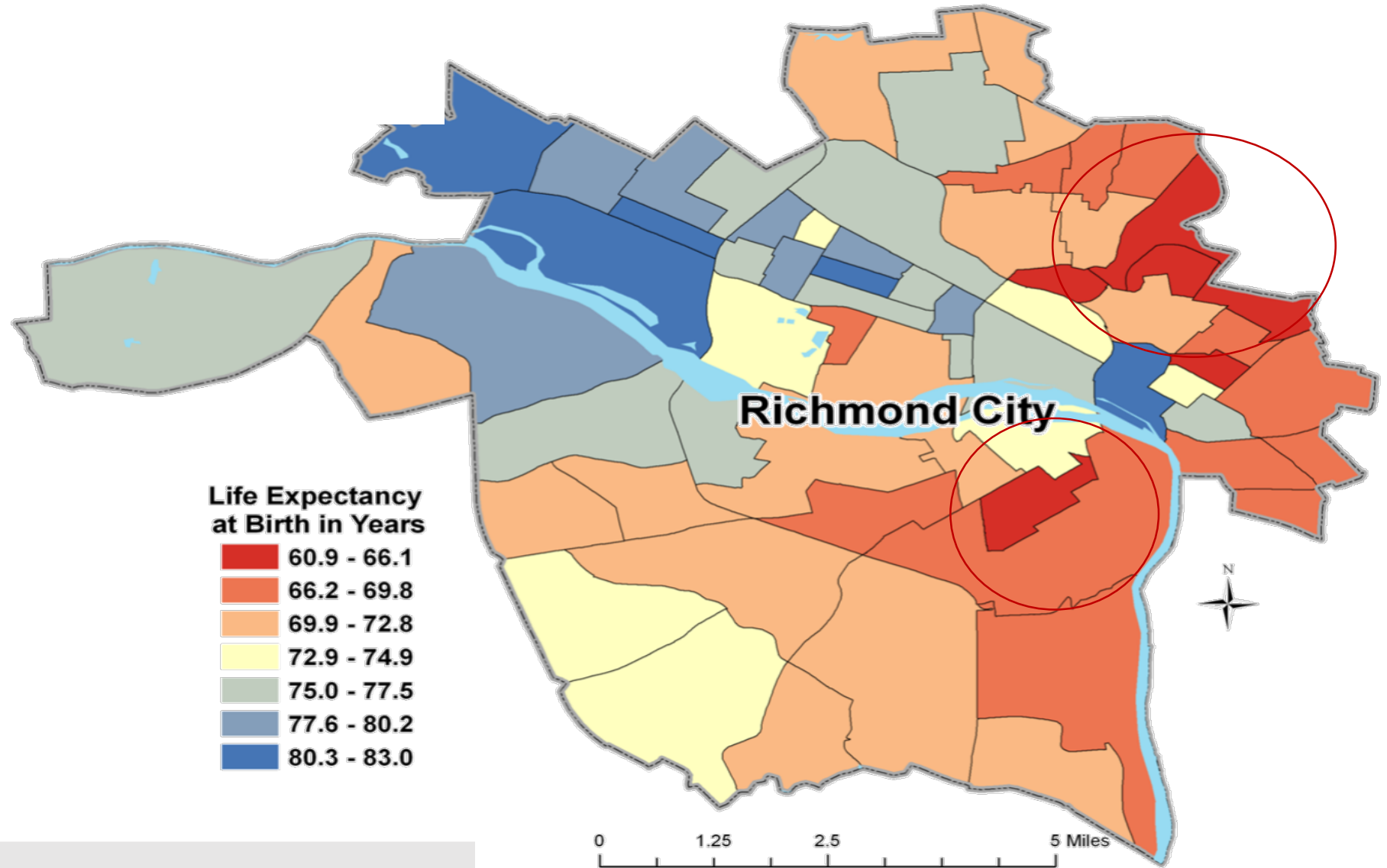
Low Birth Weight in Richmond



Gonorrhea diagnosis rates in Richmond

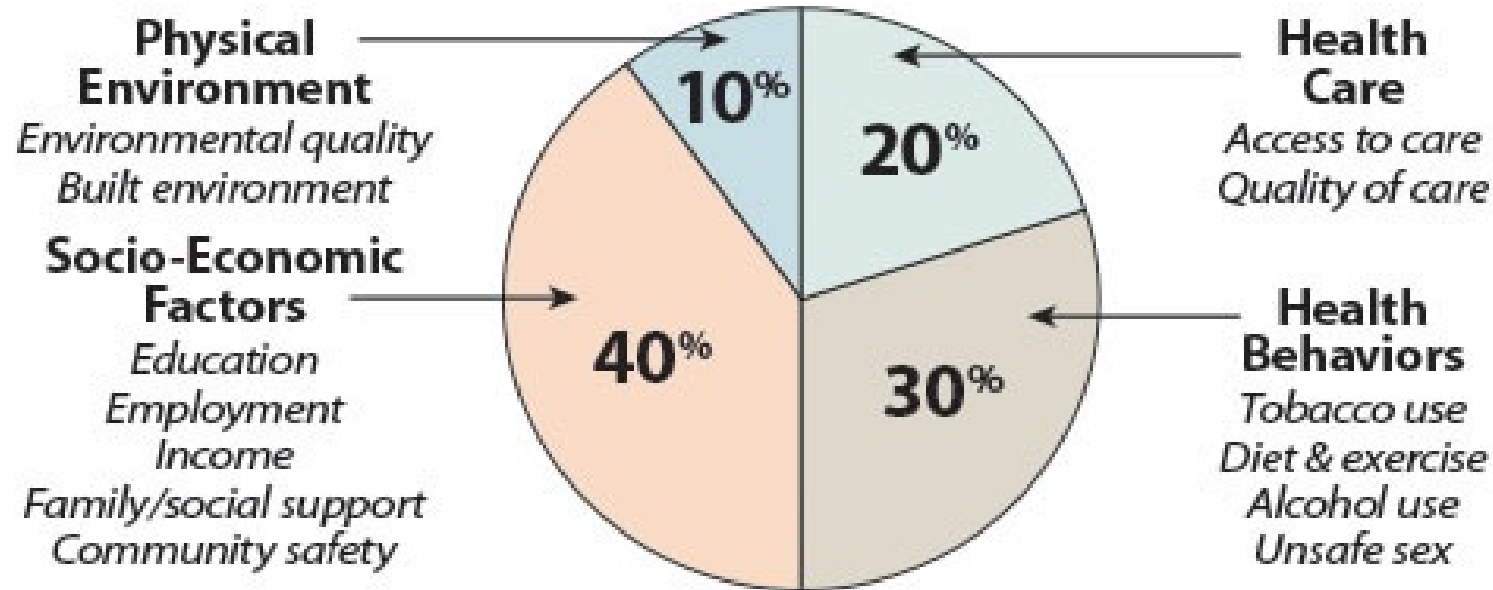


Life Expectancy in Richmond



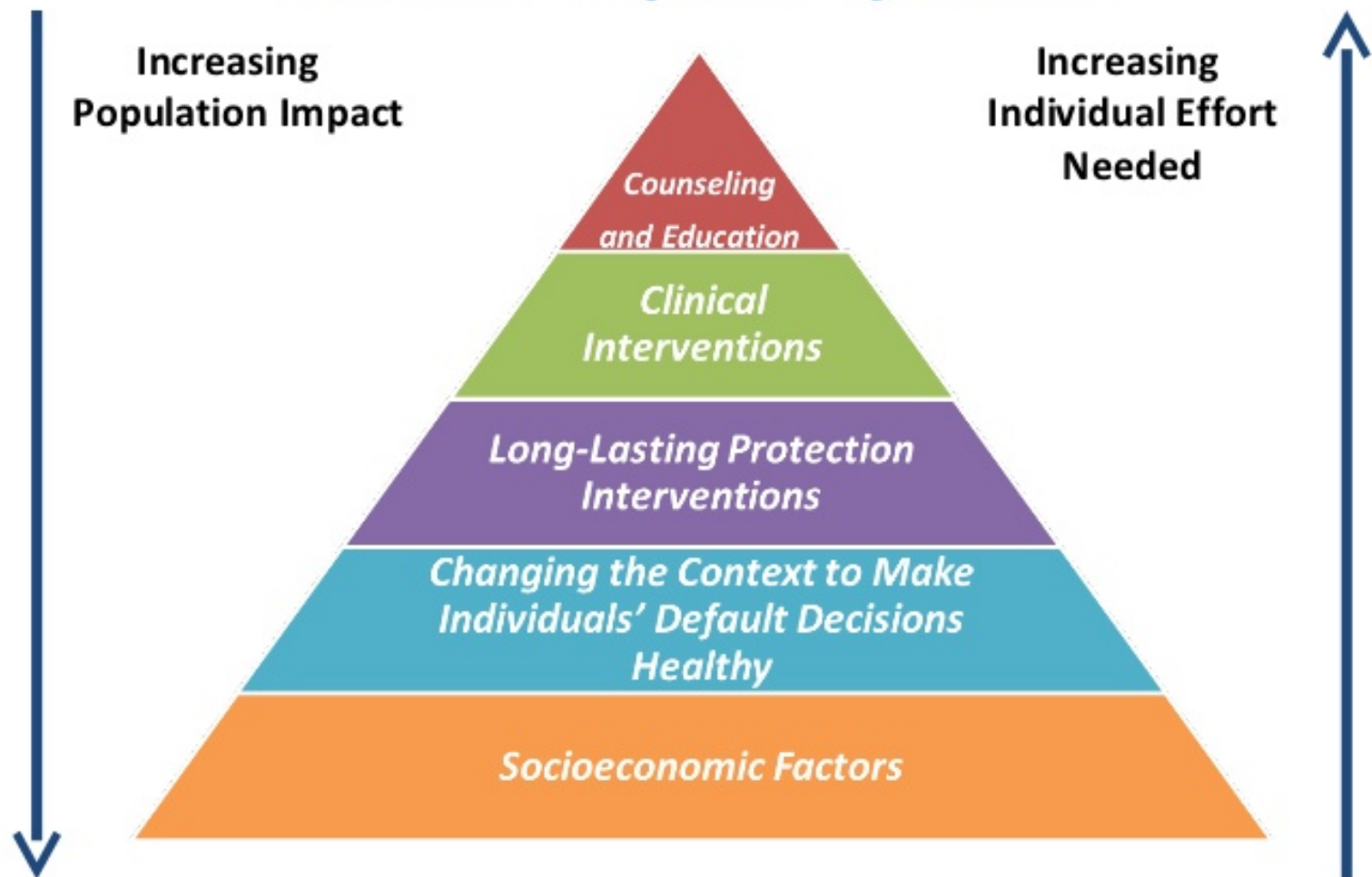
Social Determinants of Health

Population Health



Source: Authors' analysis and adaption from the University of Wisconsin Population Health Institute's *County Health Rankings* model ©2010, <http://www.countyhealthrankings.org/about-project/background>

Health Impact Pyramid



Housing quality

Housing that is safe, dry, clean, maintained, adequately ventilated, and free from pests and contaminants, such as lead, radon, and carbon monoxide, can reduce the incidence of negative health outcomes such as injuries, asthma, cancer, neurotoxicity, cardiovascular disease, and poor mental health.

Housing affordability

Affordable housing enables people to pay for other basic needs such as utilities, food, and medical care, which can reduce the incidence of negative health outcomes such as malnutrition, diabetes, anxiety, and depression.

Housing community

Neighborhoods free from segregation and concentrated poverty, and in which residents have close and supporting relationships with one another, can improve physical and mental health by reducing stress and exposure to violence and crime as well as improving school performance and civic engagement.

Housing location

Easy access to public transportation, parks and recreation, quality schools, good jobs, healthy foods, and medical care can help reduce the incidence of chronic disease, injury, respiratory disease, mortality, and poor mental health.

Source: Adapted from Human Impact Partners, 29th Street/San Pedro Street Area Health Impact Assessment (2009), accessed Jan.22, 2016, <http://www.humanimpact.org/downloads/san-pedro-st-area-hia-full-report>

© 2016 The Pew Charitable Trusts

Housing quality

Housing that is safe, dry, clean, maintained, adequately ventilated, and free from pests and contaminants, such as lead, radon, and carbon monoxide, can reduce the incidence of negative health outcomes such as injuries, asthma, cancer, neurotoxicity, cardiovascular disease, and poor mental health.

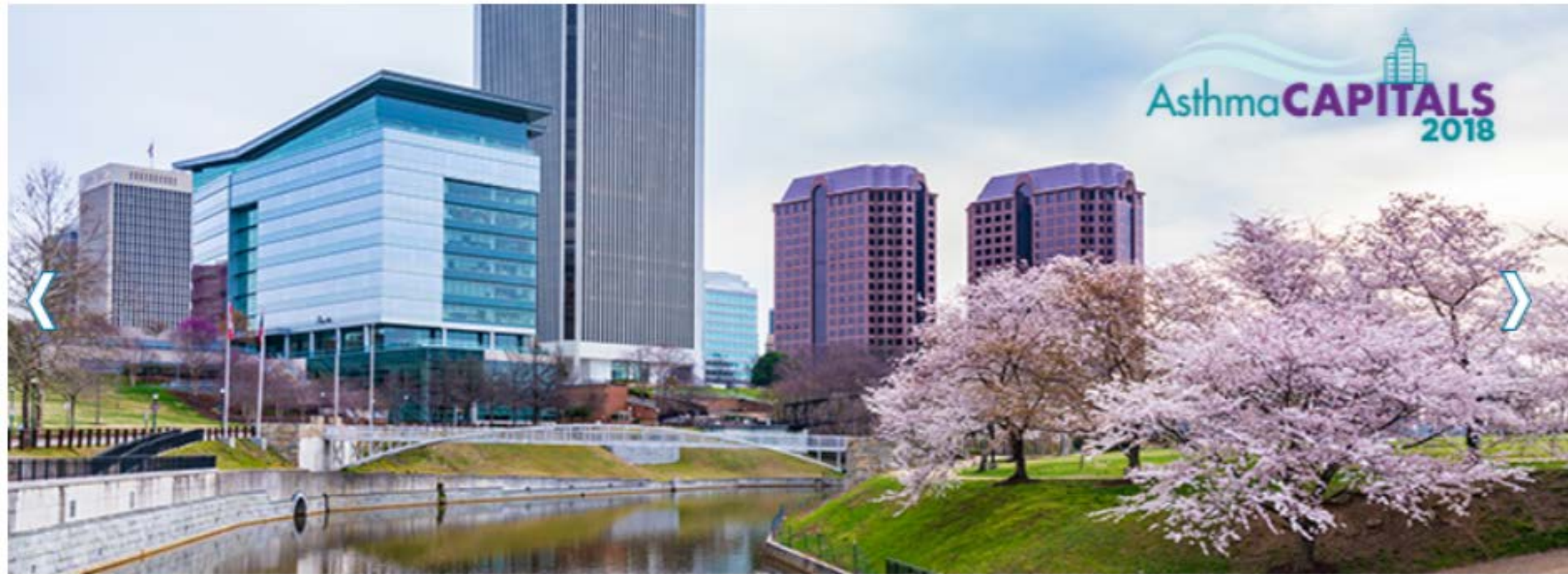


Asthma**CAPITALS** 2018

The Most Challenging Places
to Live With **ASTHMA**



Out of the 100 Cities AAFA Ranked, the Top 20 Most Challenging Places to Live With Asthma Are:



2. Richmond, Virginia

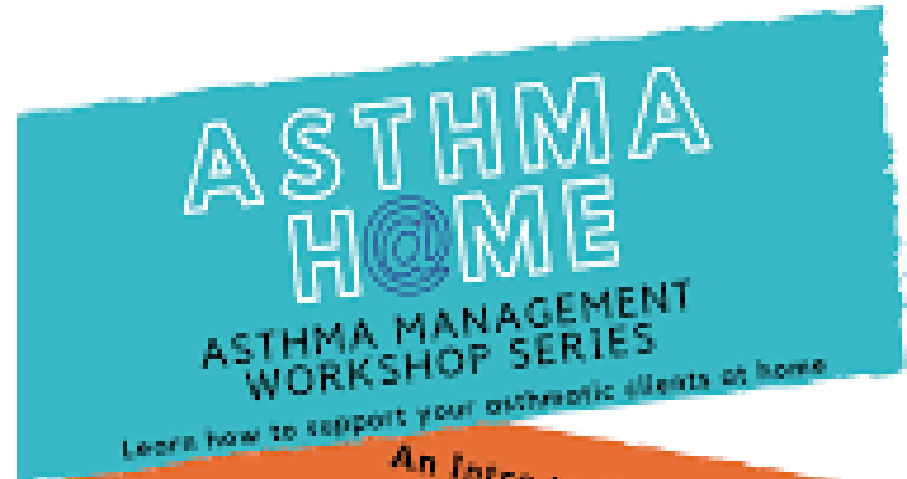
Richmond is #2 on our Asthma Capital list, but it's top in the nation for the number of asthma fatalities. The city's high poverty rate of 26.2% is a factor. Low-income families may face poorly maintained rental housing, urban locations with high pollution and lack of resources to pay for proper care. With a high pollen count and higher-than-average emergency room visits, it's no surprise Richmond is near the top of the list.



Richmond City Health District Healthy Homes Initiative

Promoting Healthy Housing and Healthy Individuals

*An Integrated Approach that
Considers the Well-Being of
the Occupants, the Structure,
and the Potential Health and
Safety Hazards*



An Intro to Healthy Homes
Kickoff Workshop
May 25, 2016 @ 10:00am-12:00pm
Main Library 101 E Franklin Street
Richmond, VA 23219

Save the
Dates!
A New Topic
Every 4th
Friday!

Free Workshop Series

Different Topics Monthly!

- Asthma Triggers
- Medical Device Usage
- Self-management tips
- Prevent Asthma attacks
- Guest speakers & much more!

Sign up/RSVP:

www.healthyhomesRCHD.com
trish.murphy@rchs.virginia.gov
804-205-3729

A workshop series focused on Asthma
management geared towards home visitors.



LEAD-SAFE &
HEALTHY
HOMES
INITIATIVE

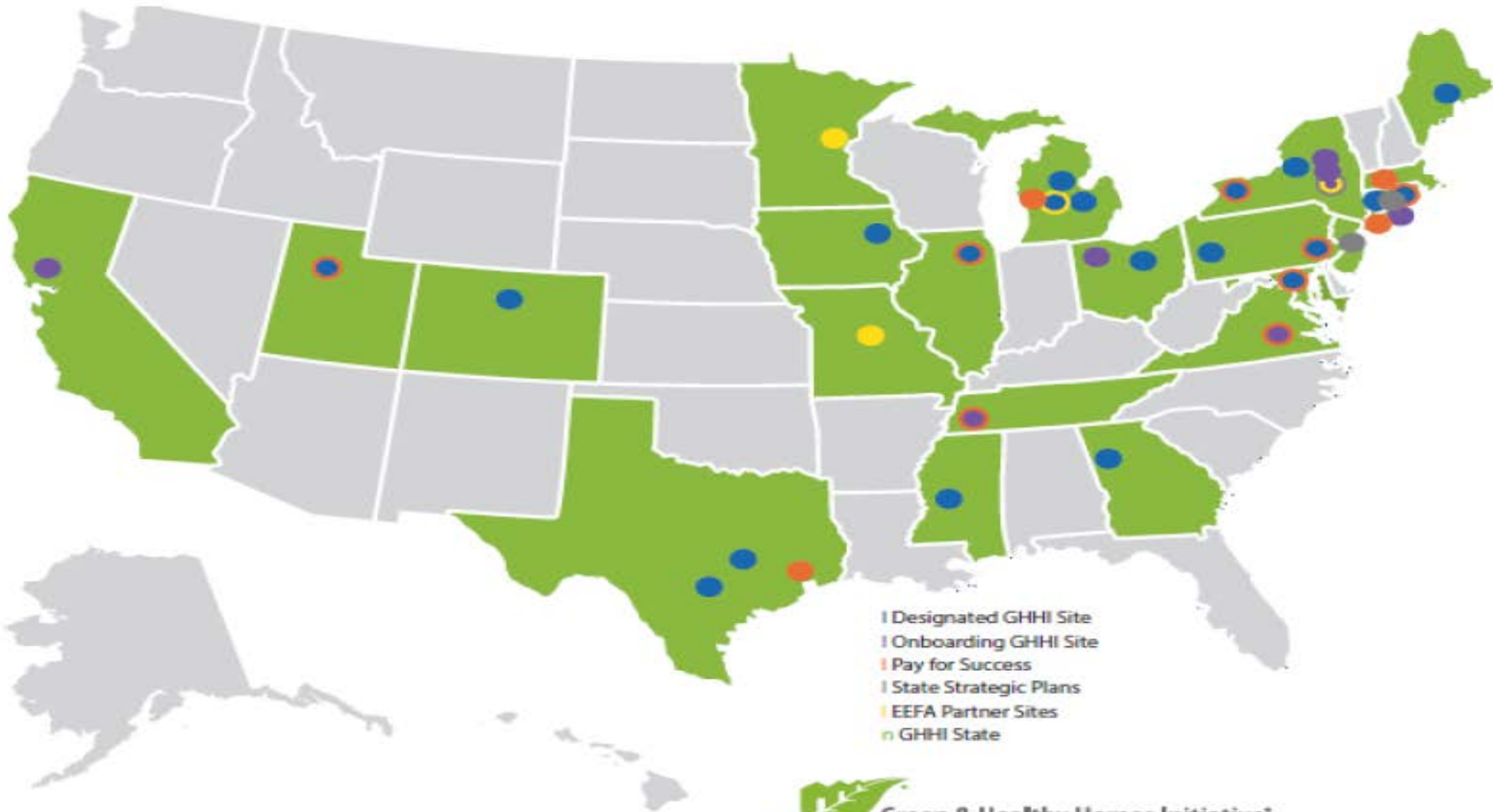


(804) 205—3500 Ext.7 HealthyHomesRCHD.com

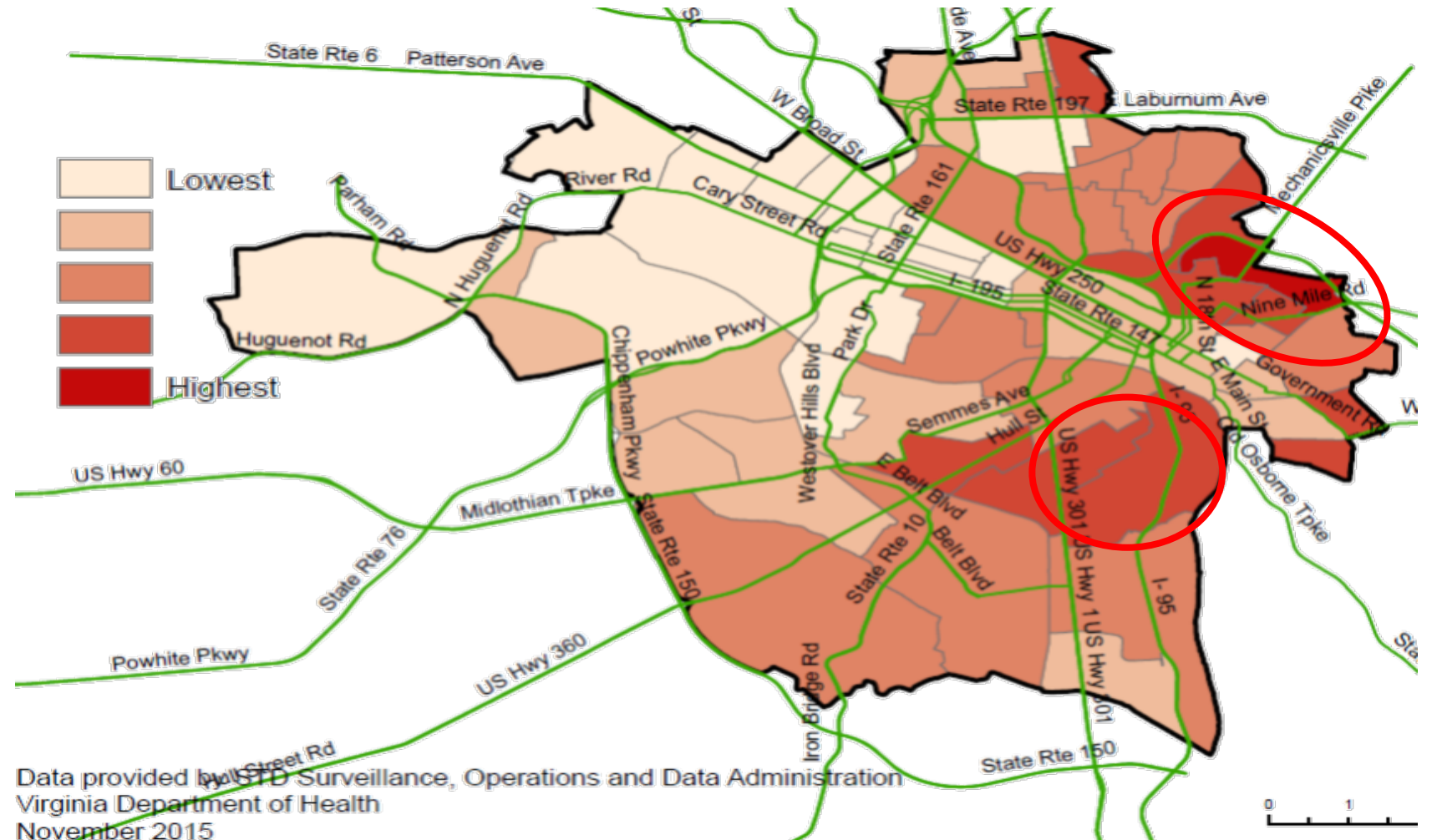


HealthyHomesVDH

Building a National Movement



Gonorrhea diagnosis rates in Richmond



Housing community

Neighborhoods free from segregation and concentrated poverty, and in which residents have close and supporting relationships with one another, can improve physical and mental health by reducing stress and exposure to violence and crime as well as improving school performance and civic engagement.

Mosby Resource Center
786-0204

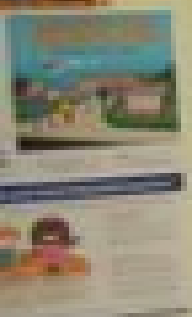
NO TRESPASSING
BY ORDER OF
RRHA

MOSBY COURT
RESOURCE
CENTER

1536

MOSBY
CLINIC
OPEN
→

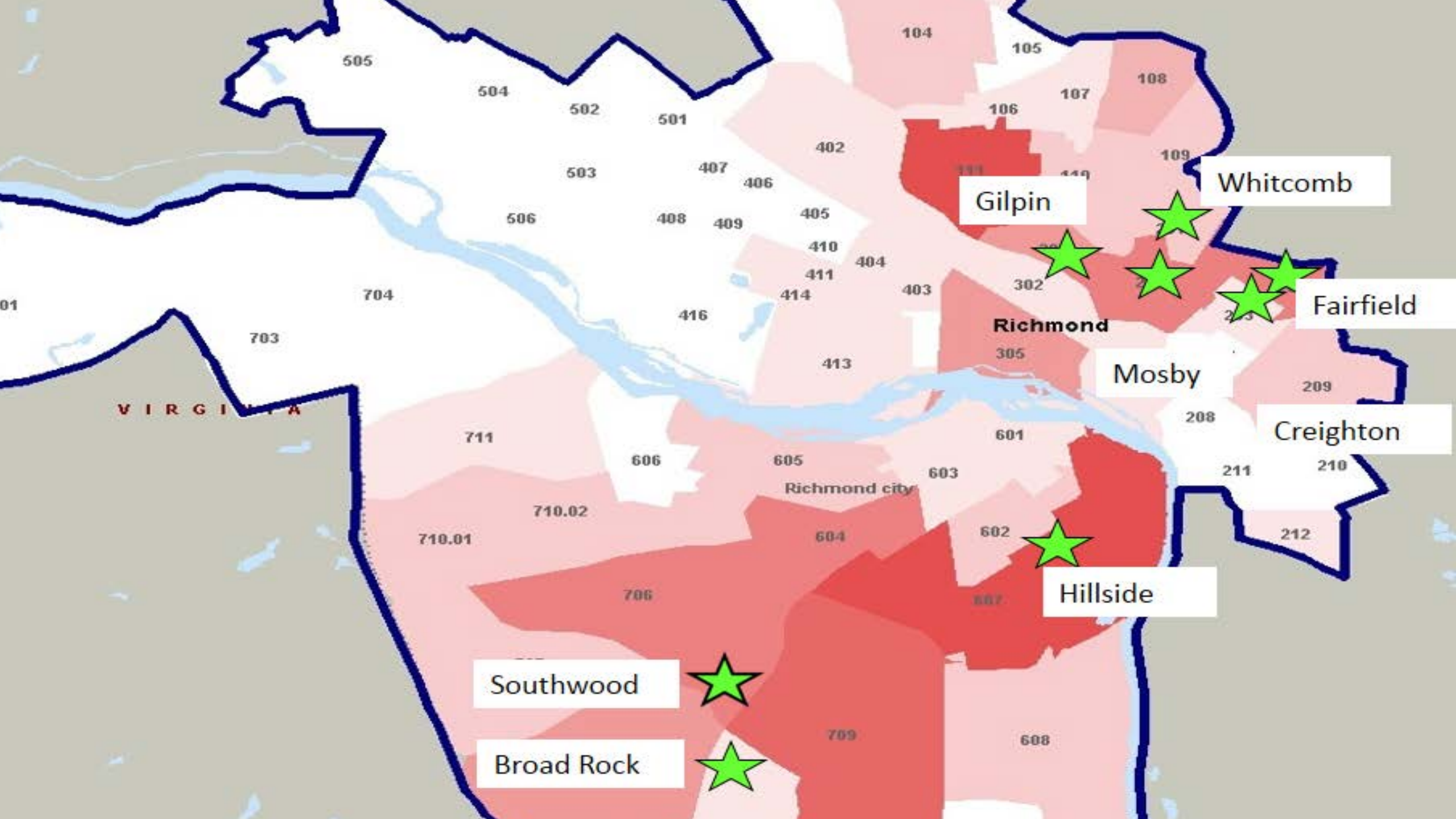




RECEPTION
PLEASE







Gilpin

Whitcomb

Fairfield

Mosby

Creighton

Hillside

Southwood

Broad Rock

VIRGINIA



Housing affordability

Affordable housing enables people to pay for other basic needs such as utilities, food, and medical care, which can reduce the incidence of negative health outcomes such as malnutrition, diabetes, anxiety, and depression.

Housing location

Easy access to public transportation, parks and recreation, quality schools, good jobs, healthy foods, and medical care can help reduce the incidence of chronic disease, injury, respiratory disease, mortality, and poor mental health.

A photograph of two young girls with dark hair in braids, seen from behind, looking out towards a blurred green background. The girl on the left is wearing a light blue t-shirt. The girl on the right is wearing a teal top. The text is overlaid on the left side of the image.

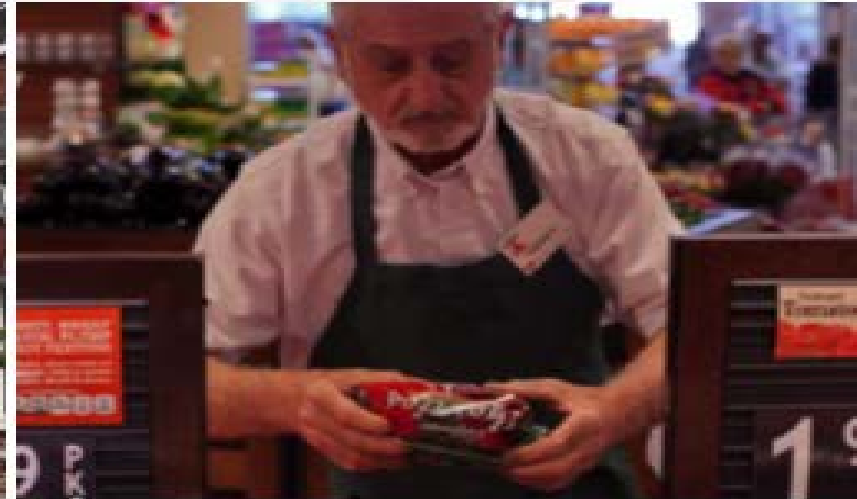
INVEST HEALTH

Strategies for Healthier Cities

A Project of the *Robert Wood Johnson Foundation*
and *Reinvestment Fund*



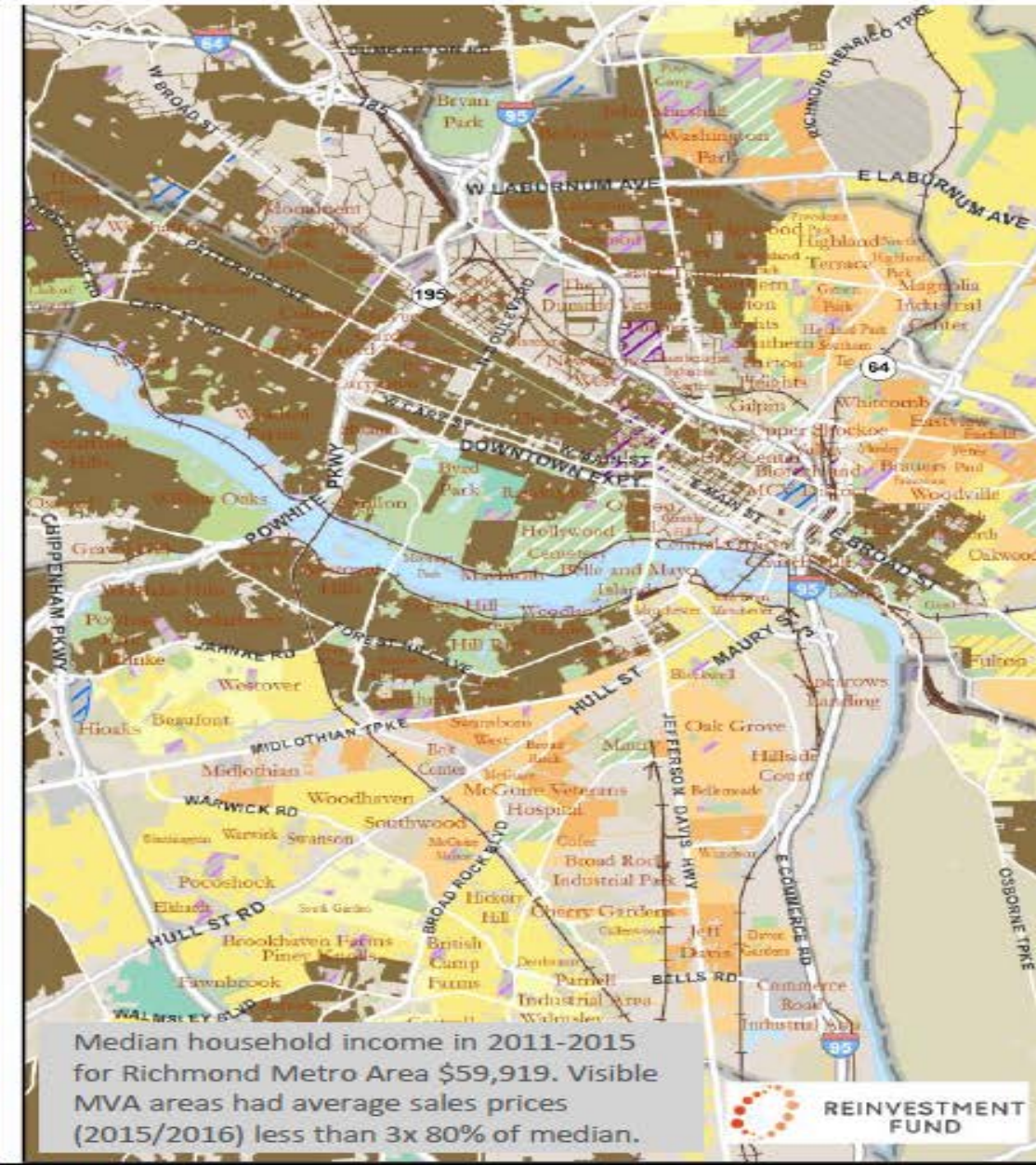
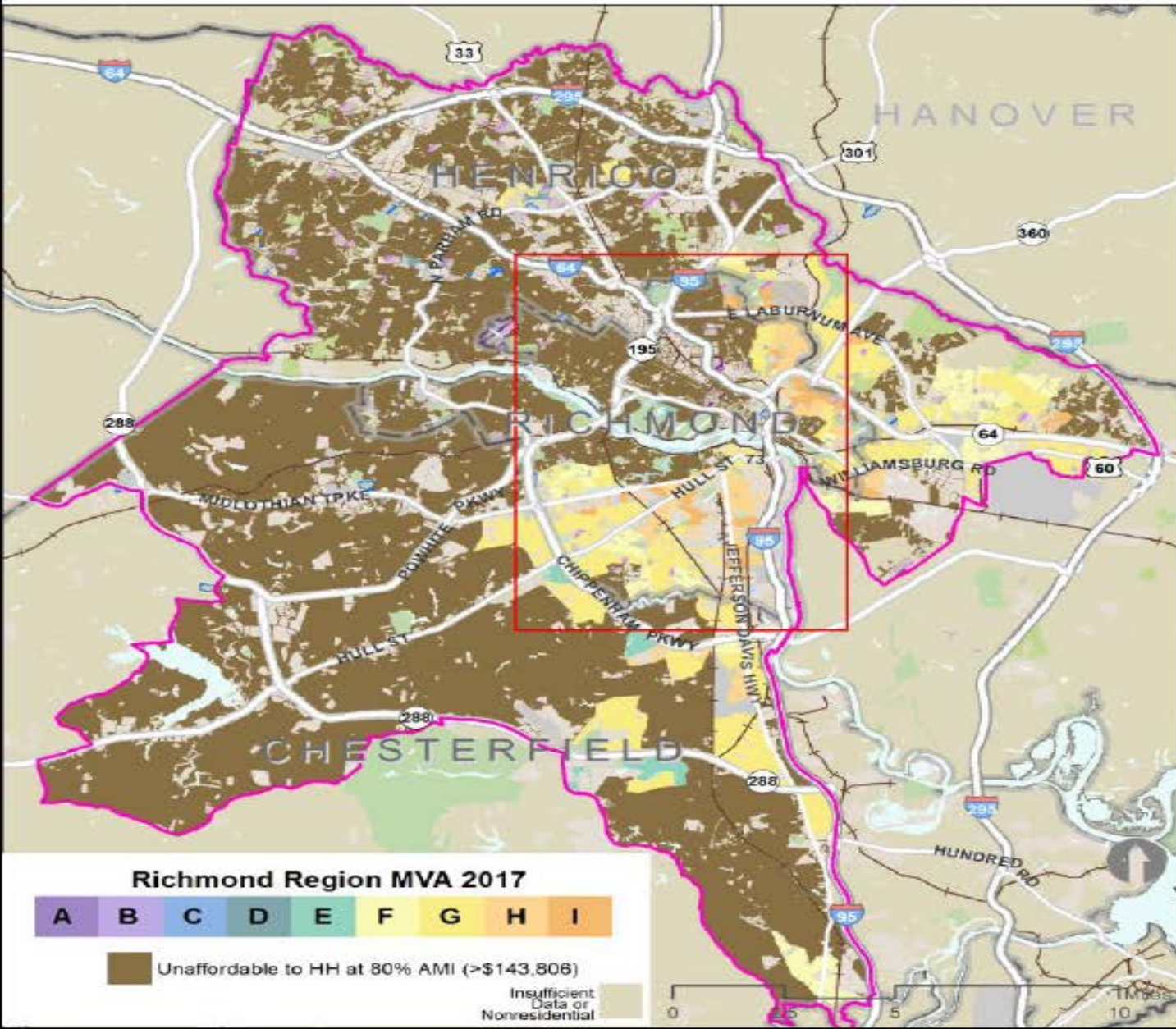
REINVESTMENT
FUND



Richmond Region Market Value Analysis

February, 2018

Areas Affordable at up to 80% Median Household Income





Transforming investment in communities

The Center for Community Investment works to overcome disinvestment and improve opportunity so that everyone has a fair chance to lead a healthy and productive life.



[About CCI](#)

[In Practice](#)

[Fellowship](#)

[Blog](#)

[Contact Us](#)



—
What's your role?



Danny TK Avula MD, MPH
Director, Richmond City Health District
Danny.Avula@vdh.virginia.gov
www.rchd.com



**RICHMOND CITY
HEALTH DISTRICT**